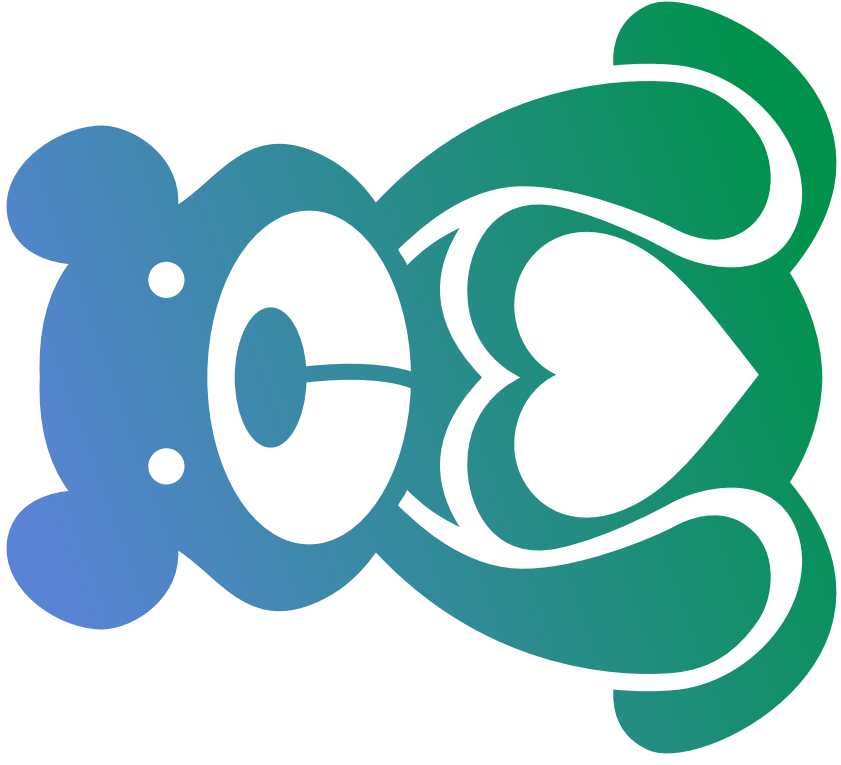




NEC UK

Because Tiny Bowels Matter!





NEC UK

Registered Charity: 1181026

NECROTISING

ENTEROCOCCITIS

NEC

BEECAUSE

TYNZ

BOWELS

MATTER!

Join Us

ZN

BUILDING

A WORLD

WITHOUT

N

E

C!

TOGETHER

EE

ME

CAN

**SUPP
PORT**

FAMILIES

W

Y

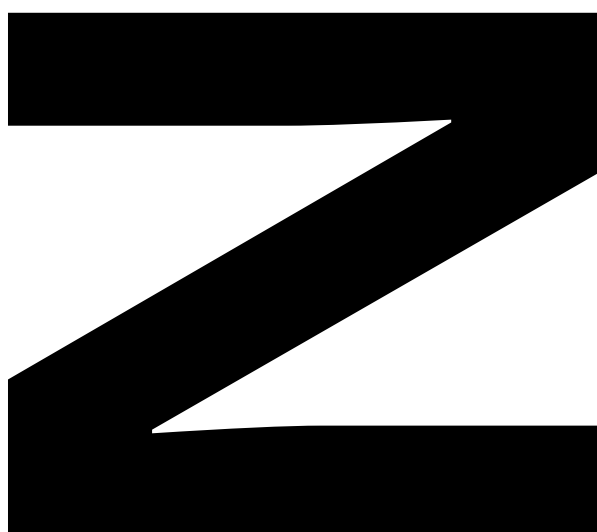
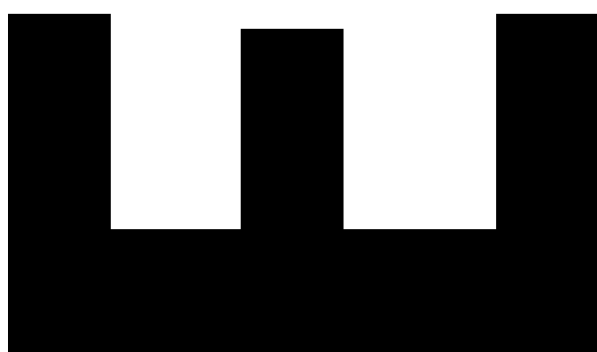
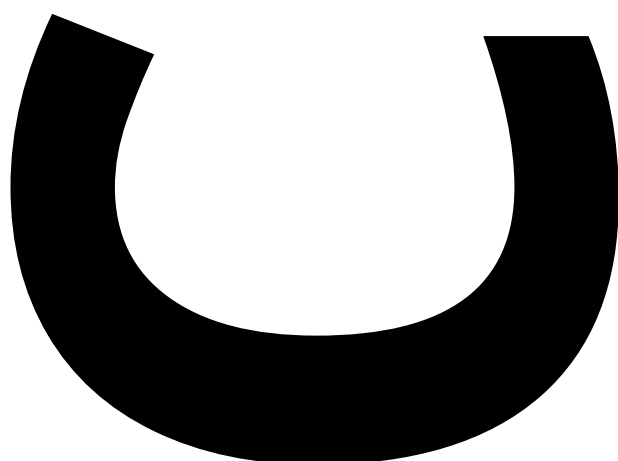
I

L

OURS

**A
F
F
E
E
C
T
E
D**

BY





NEC UK

Because Tiny Bowels Matter!

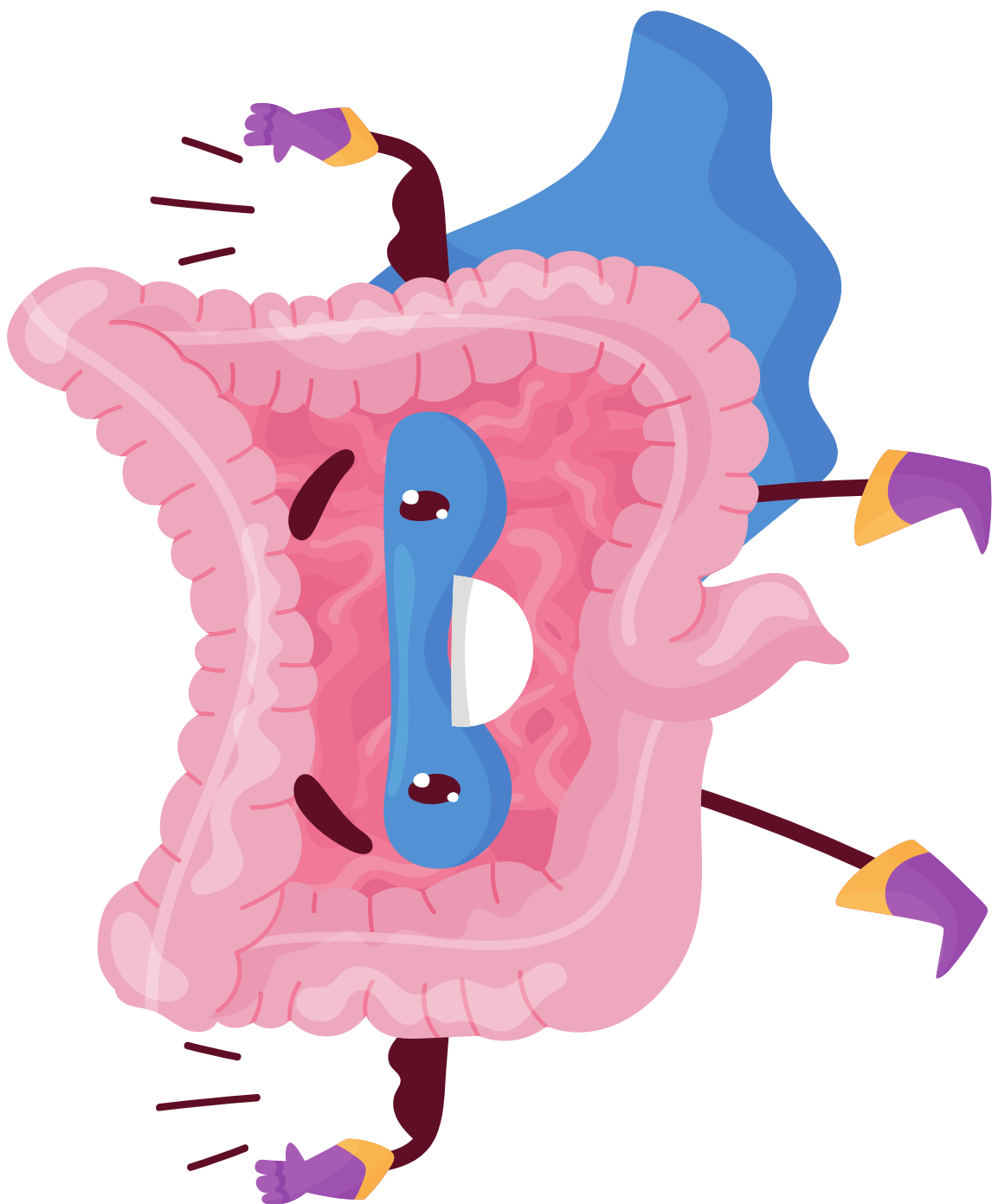
NEC

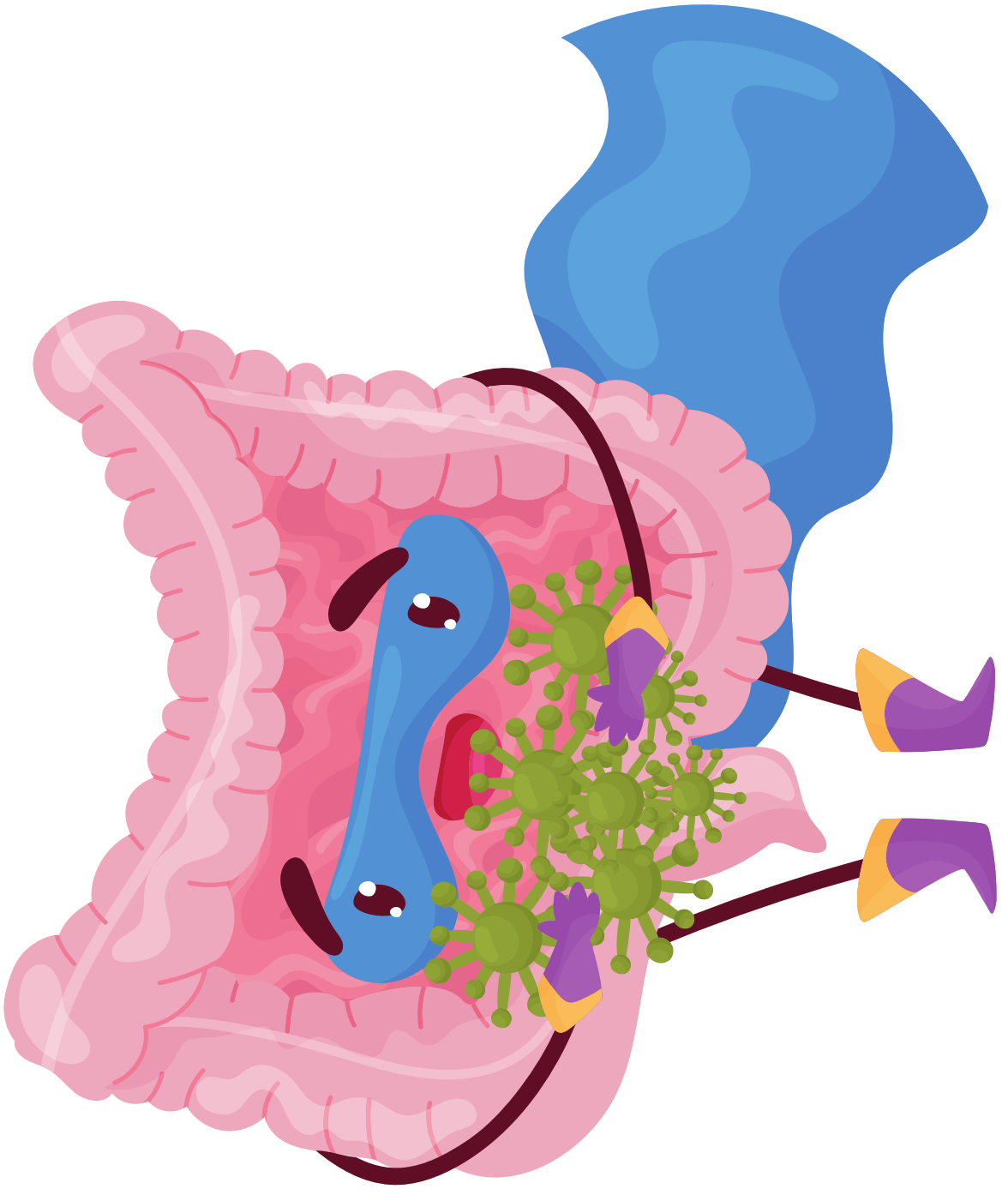
AWAWARENESS

DAY

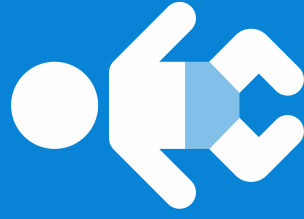
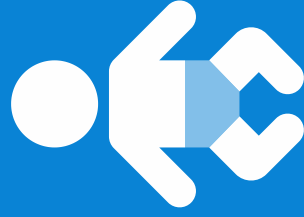
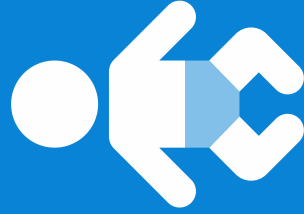
MAY 17

2022





3 Babies Every Week Die From NEC!



More Babies Die Per
Year From NEC Than
Childhood Leukemia!

Lack of robust
diagnostic criteria
results in delayed
diagnosis and
hampers research
efforts at preventing
or better treating
NEC!

NEC is mostly seen in premature babies but can also occur in term babies.

The risk of premature babies developing NEC is thought to be higher in babies born before 32 weeks or those who weigh less than 1500g at birth.

Babies in NICU
have a 1 in 20
chance of
developing NEC.
This increases to 1
in 10 if they weigh
less than 1.5kg
(3.3lb).

Signs of NEC

The symptoms of NEC

- vomiting
- a swollen tummy (abdomen)
- breathing difficulties
- blood in the poo
- generally unwell
- low blood pressure

Around 3 in 10 babies
with NEC will need
surgery

Short Bowel Syndrome (SBS)

If a large section of bowel was removed there is a chance your baby may develop short bowel syndrome.

This is when the bowel is not long enough to absorb all the nutrients that your baby needs to grow.

If your baby has SBS they may need:

- artificial nutrition total parenteral nutrition – (TPN)
- more operations
- to stay in hospital longer